

## Ductwork Mounting Kit

for use with the MGS-550 Gas Detector



### Fixed Gas Detection

P/N: 1100-1059 | June 2020 Revision 0

### Installation Guide



For more detailed product information, scan here or visit [www.mybacharach.com](http://www.mybacharach.com) to access the MGS-550 User Manual (P/N: 1100-1000).

## 1. Introduction

The MGS-550 Ductwork Mounting Kit is designed to allow the gas detector to sense the presence of the target gas in ductwork using a remote sensor with the MGS-550 Gas Detector.

Please read and strictly follow the contents of this document for information on the installation of remote sensor head.

## 2. Safety Instructions



**CAUTION:** Targeted ductwork MUST NOT be in operation during the installation of the mounting kit.

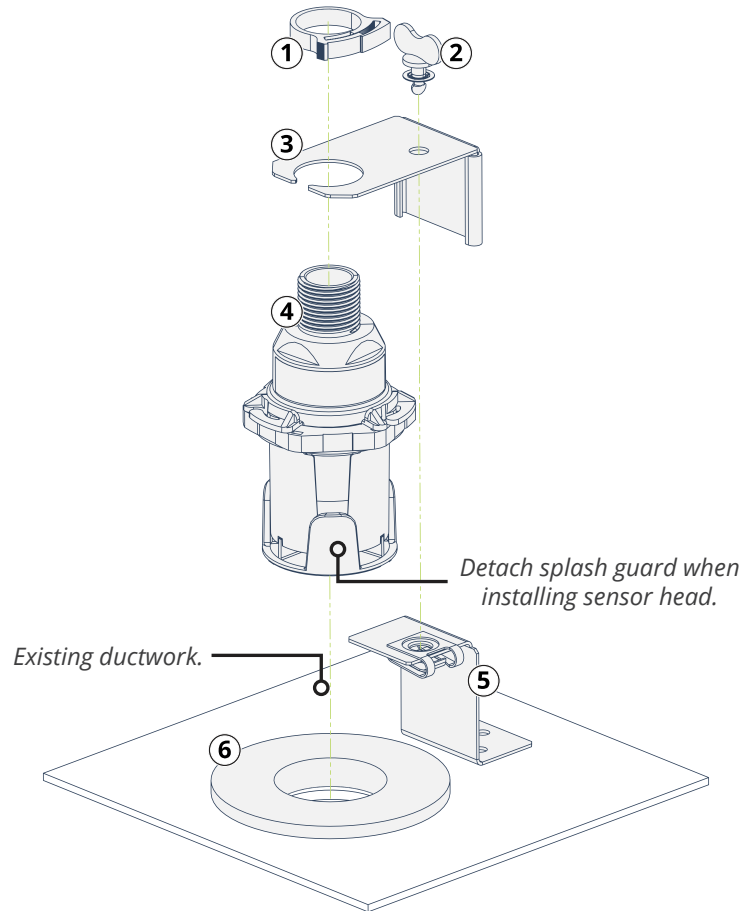


**IMPORTANT:** The mounting kit requires at least 4" (100 mm) of vertical clearance.



**IMPORTANT:** The duct mount / remote sensor should be positioned downstream of any potential leak source.

## 3. Component Overview



1	Connector Ring
2	¼ Turn Wing Screw
3	Upper Bracket
4	Remote Sensor Head*

5	Lower Bracket
6	Rubber Grommet

\*MGS-550 remote sensor head sold separately.

## 4. Installation

- Using a hole saw, cut a 2 ½" (6.3 cm) hole into the existing ductwork.
- Install the rubber grommet into the hole.
  - Position the molded printing facing up.
- Install the remote sensor head into the upper bracket, firmly securing it using the connector ring.
- Using the ¼ turn wing screw, secure the remote sensor head and upper bracket onto the lower bracket.
  - The splash shield may be removed from the sensor head to aid installation of the sensor in the ductwork.
- Using self-tapping screws, secure the assemble to the existing duct work.
- Connect the remote sensor head to the gas detector and configure in accordance with the instruction provided in the MGS-550 User Manual (P/N: 1100-1000).

