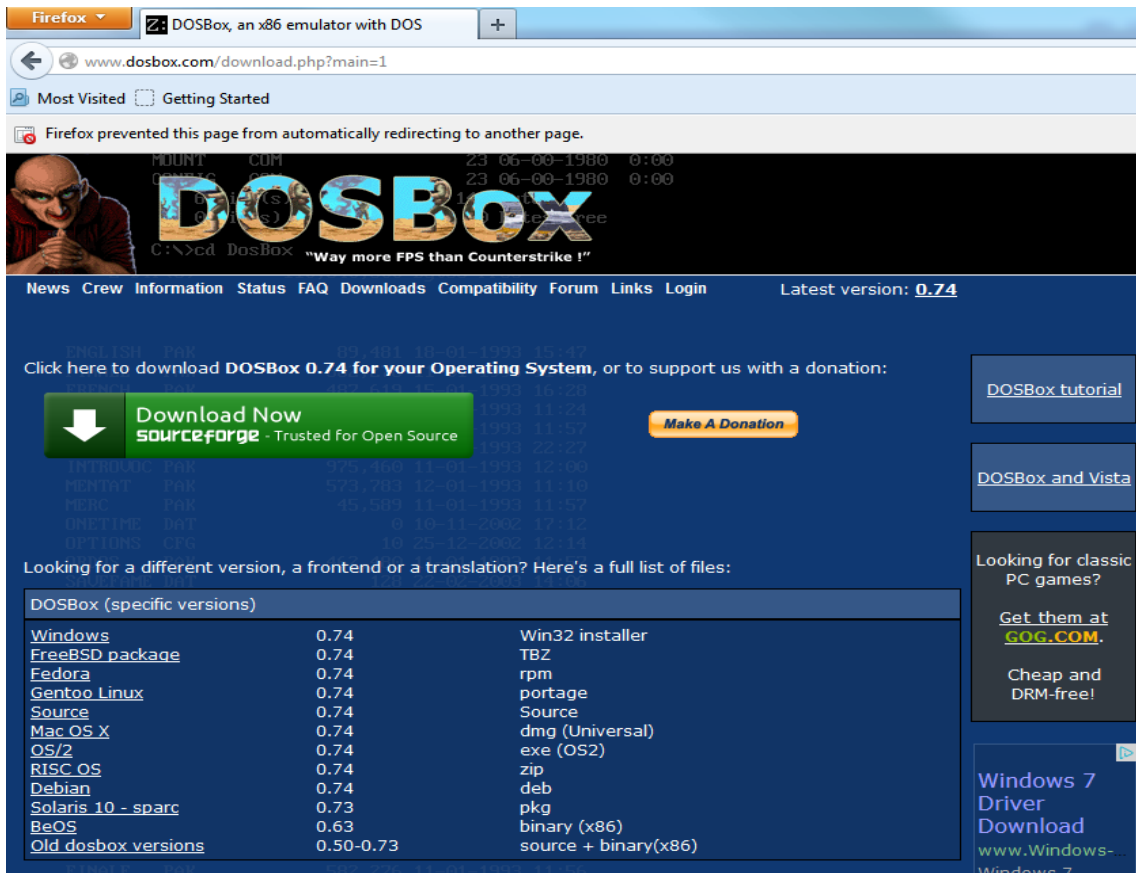
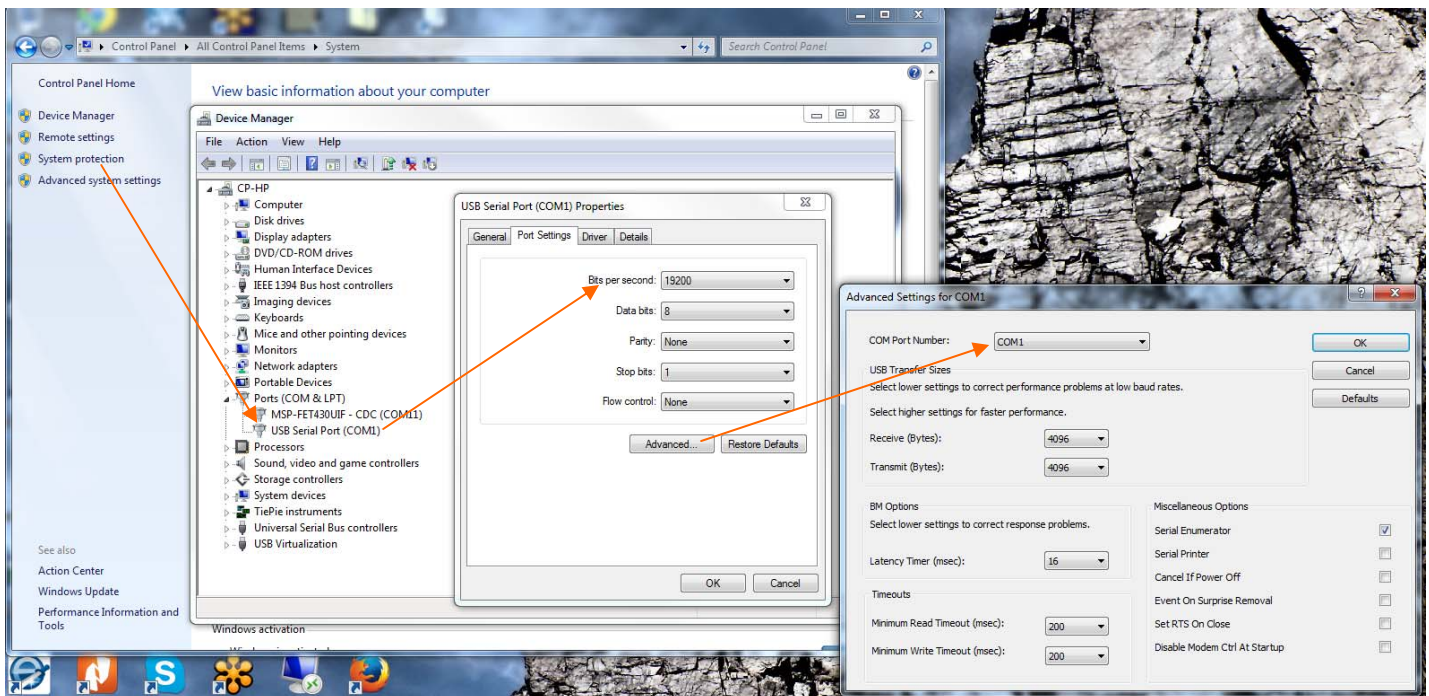


# Using DOSBox to run PC2HGM software on windows 7

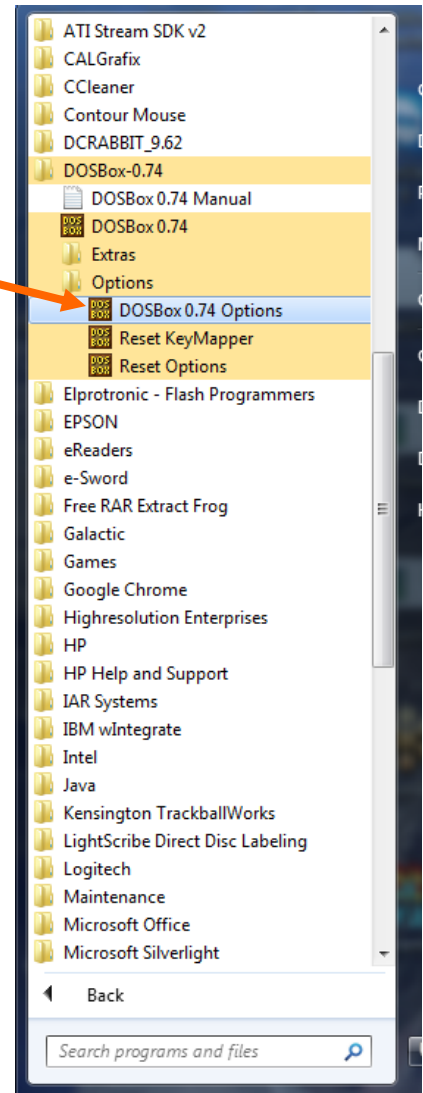
1. Download and run the win32 installer from the DOSBox web sight (works on win64 as well),.



2. Map your USB to Serial converter to COM1 with parameters of 19200,N,8,1,none from Device Manager. Make sure you first install the driver for your specific converter.



3. From the Start Menu click "ALL PROGRAMS" click DOSBox then Options then DOSBox Options, this will open the DOSBox config file in NotePad



4. Scroll to the bottom of the file, find the line that says Serial1=dummy and edit it to read as shown below then save your changes and close the file.

```
dosbox-0.74.conf - Notepad
File Edit Format View Help
autofire=false
swap34=false
buttonwrap=false

[serial]
# serial1: set type of device connected to com port.
#           Can be disabled, dummy, modem, nullmodem, directserial.
#           Additional parameters must be in the same line in the form of
#           parameter:value. Parameter for all types is irq (optional).
#           for directserial: realport (required), rxdelay (optional).
#                           (realport:COM1 realport:ttys0).
#           for modem: listenport (optional).
#           for nullmodem: server, rxdelay, txdelay, telnet, usedtr,
#                           transparent, port, inhsocket (all optional).
#           Example: serial1=modem listenport:5000
#           Possible values: dummy, disabled, modem, nullmodem, directserial.
# serial2: see serial1
#           Possible values: dummy, disabled, modem, nullmodem, directserial.
# serial3: see serial1
#           Possible values: dummy, disabled, modem, nullmodem, directserial.
# serial4: see serial1
#           Possible values: dummy, disabled, modem, nullmodem, directserial.

serial1=directserial realport:com1
serial2=dummy
serial3=disabled
serial4=disabled

[dos]
#           xms: Enable XMS support.
#           ems: Enable EMS support.
#           umb: Enable UMB support.
# keyboardlayout: Language code of the keyboard layout (or none).

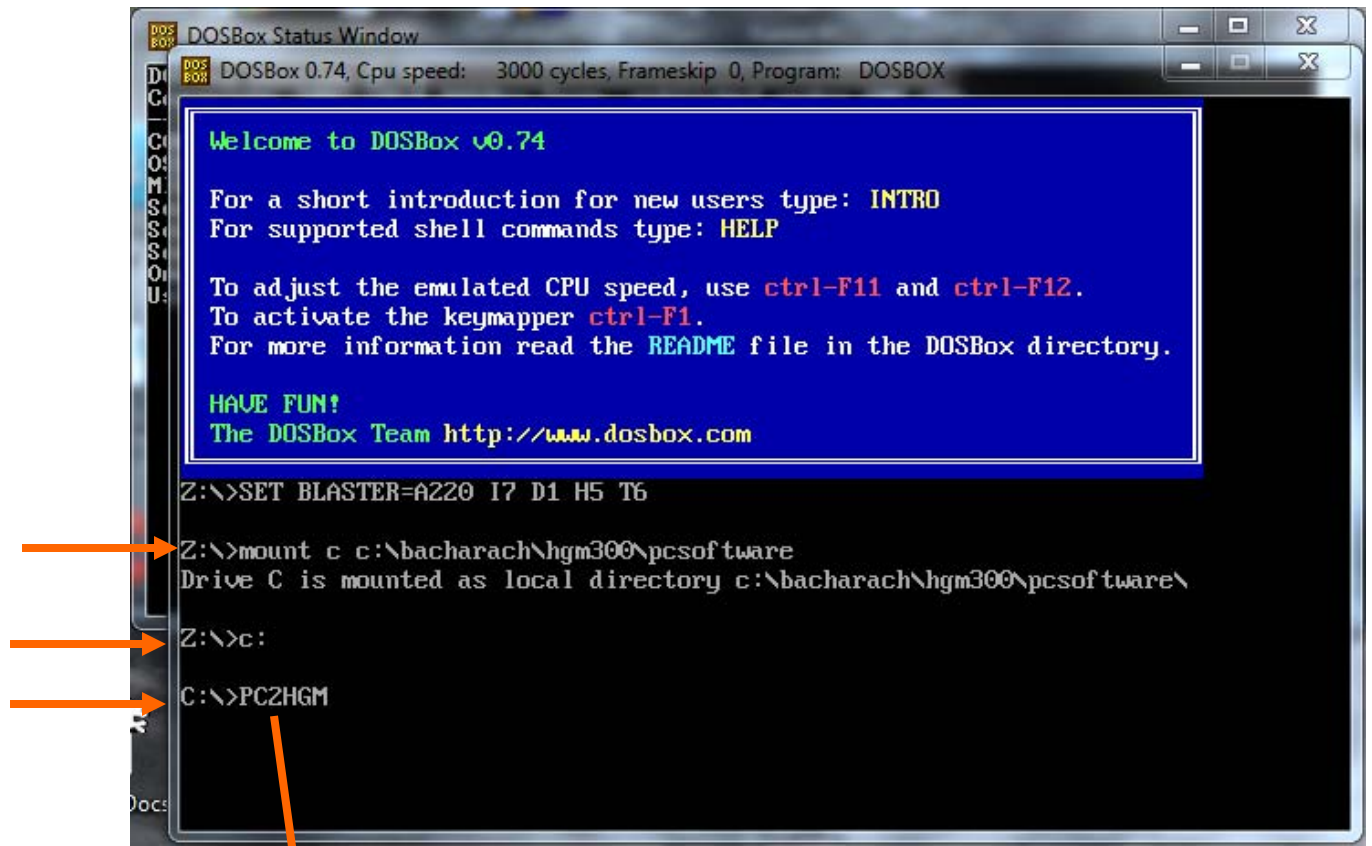
xms=true
ems=true
umb=true
keyboardlayout=auto

[ipx]
# ipx: Enable ipx over UDP/IP emulation.

ipx=false

[autoexec]
# Lines in this section will be run at startup.
# You can put your MOUNT lines here.
```

5. Launch DOSBox from the desktop shortcut that was created when you ran the installer. Next map the location of your PC2HGM.exe file with the mount command shown below (substitute the correct path on your PC). Then switch to the mounted drive by typing c: and enter. Next you can launch the PC software as shown below. Make sure you are con-



6. PC software will be launched and setup data collected from the monitor.

